



Summer Newsletter 2

This half term runs from June 4th to July 26th

Hot Weather Warning

Please ensure you send your children with a sun hat

& once a day sun cream applied.

Covering up with suitable clothing is added protection.



Dates for your Diary

- ROTINS Transition Day June 27th am/pm, July 9th am
- Carnival July 13th
- Last Day of Term July 26th
- Bank Holiday August 26th
- Inset Day September 2nd
- Village Show September 8th



Teddy Appeal

We are in need of soft toy donations for our fabulous Teddy Tombola held at Radcliffe-on-Trent Carnival.

This is a huge fundraiser for us, so please dig deep for those pre-loved best friends!

We can take donations at the gate, but if you need help, we may also be able to collect from you, just let us know!



Committee

Playgroup is a Registered Charity that is run by a committee.

We do still need more members to join our committee, which will involve you attending a half termly meeting & having a voice in the running of Playgroup.

Also to help with fundraising & events.

If you think you could help, please let us know!

Spaces Available

From September, we will be waving an emotional farewell to our school & school nursery starters.

As a result of this, we will have spaces available here at Preschool Playgroup across all sessions. Please therefore recommend us to friends & family.





Radcliffe on Trent Charity Carnival!



The theme this year is Amazing Animals!

Playgroup have decided to use the lovely film Happy Feet as our theme!

We will be making the children's costumes & hope to have a great turnout for the procession, featuring as many little waddling penguins as possible!

Please let us know if you plan to attend. (Children must be supervised by parents/carers).

Judging will commence at 12.40pm at Golf Road (please arrive 5-10 minutes before), prior to walking down Bingham Road to The Grange. We will have our usual stand, with children's activities & our famous Teddy Tombola!

Please remember sun hats & sun screen.

July 13th

DON'T FORGET

Allergies



Please do not pack nut or egg products in your child's packed lunch. This is imperative as we have children in the setting with serious allergies.

Please pack alternative shoes if your child is wearing wellies on arrival as June is highly allergic to latex.

Thank you for your understanding.



Ad Hoc Sessions

We have availability for Ad Hoc sessions for the remainder of this term. If you would like to book your child in for more sessions outside of their usual schedule,

please email us at rotplaygroupadmin@gmail.com.



STIKINS Name Labels

Please don't forget to label coats, hats, bags and bottles to avoid confusion, and check the lost property box regularly. Use the STIKINS link on our website for waterproof non-iron labels which can be used for all these items and earns us commission.

School starters will receive their free sample in the coming weeks!

Nappies!

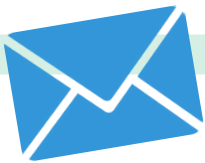
If your child is not toilet training yet, please ensure they come to playgroup in NAPPIES and not Pull Ups. We have a very high number of 2 year olds in our setting and nappy changing with pull ups takes considerably longer and is taking staff away from spending time with the children.

Notice Period

Don't forget, there is a 4 week term time notice period for changing sessions.

This is June 28th for the start of term in September.

This also applies to those starting school, please confirm in writing by June 28th if your child is leaving for school



Contact Numbers

Ill or Absent? Please call Playgroup on 07891829513 or email rotpreschoolplaygroup@googlemail.com.

Fees, invoices, funding, changes to sessions or general admin queries? Please email Kelly / Amy at rotplaygroupadmin@googlemail.com

Fee Changes

As per our email, please see the below our fees which apply from September 2024

Breakfast club inc breakfast 8.00am - 9.00am £8.25

Morning standard start time 9.00am - 12.00pm £18.75

Morning early start (no breakfast) 8.30am - 12.00pm £21.87

Lunch club 12.00pm - 1.00pm £6.25

Afternoon 1.00pm - 4.00pm £18.75

Full day 9.00am - 4.00pm £43.75

After school club inc hot tea 4.00pm - 5.00pm £9.25

Extended full day 8.00am - 5.00pm £61.25



Funding - The Basics

