



Spring Newsletter 2025

This half term runs from January 6th - February 14th



Oh my goodness, 2025 already!

Firstly, a big big welcome to all of our lovely new starters. You have all settled in amazingly, we're so proud!

Secondly, thank you to all those that attended our Christmas Nativities in December. We had such a fun time celebrating with you.

Lastly, thank you to those who attended our AGM, we are thrilled to have some fabulous new committee members & are looking forward to getting stuck in with brainstorming new & exciting ideas for Playgroup!



Community Café Saturday 18th January

COFFEE
TIME

A huge huge thank you to all that supported us at the community café. We really couldn't have done it without you! Whether it was donating cakes for us to sell, helping with the craft table, serving at the till or washing pots, we really are grateful.

If you weren't able to help this time, please do keep an eye out for our future requests for volunteers. We have a few events throughout the year and we always have a great time and a giggle!

We have been enjoying celebrating Chinese New Year!

We've eaten yummy snacks, decorated our rooms, created our own Chinese lanterns and learnt about how Chinese New Year is celebrated!



2025 is The Year of The Snake!

2025



How to say Happy New Year in Chinese!

新 (Xīn) 年 (nián) 快 (kuài) 乐 (lè!)

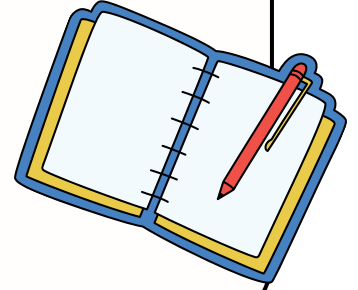
Dates for your Diary

- Kids Praise **Feb 12th 3.45-4.45pm**, St Mary's Church Hall. A fun, lively service aimed at under 11's. See link for more info <https://www.stmarysradcliffe.org/kids>

- Valentine's Day February 14th



- **HALF TERM - Feb 17th-21st Playgroup closed**
- **INSET DAY - Feb 24th Playgroup closed**



- Mother's Day March 30th



Session Changes

If you wish to make any changes to your child's sessions for the term **after Easter**, you will need to confirm this in writing by **March 7th**. This is the 4 week term time notice which is called out in our T's & C's. **This also applies to those leaving us for other settings/school.**

Please email us at rotplaygroupadmin@gmail.com

Ad Hoc Sessions

We have some availability for Ad Hoc sessions this term. If you would like to book your child in for more sessions outside of their usual schedule, please email us at rotplaygroupadmin@gmail.com.

We do not require notice for these sessions, just pop us a message with your requests!

If you have unused funding hours, we may be able to utilise these. However if not, please refer to our website for prices.

Wraparound Sessions

We also have availability for wraparound sessions, we offer breakfast club & afterschool club every day.

Drop us an email if you wish to add any of these to your current sessions!

Reminders

Allergies

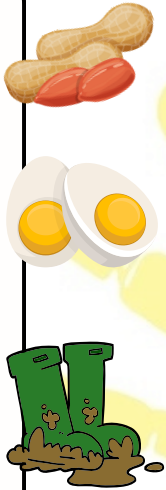
Please do not pack **nuts or products containing nuts** in your child's packed lunch.

Please do not pack **fresh eggs** in your child's packed lunch i.e. boiled eggs, egg sandwiches (cakes etc are ok).

This is imperative as we have children in the setting with serious allergies.

Please pack alternate shoes if your child is wearing **wellies** on arrival as June is highly allergic to latex.

Thank you for your understanding.



STIKINS

Please label coats, hats, bags and bottles to avoid confusion. Use the STIKINS link on our website for waterproof non-iron labels which can be used for all these items and earns us commission.



Contact Us

Ill or Absent? Please contact Emma / June:
07891829513 or rotpreschoolplaygroup@googlemail.com.

Fees, invoices, funding, session changes or general admin queries? Please email Kelly / Amy:
rotplaygroupadmin@googlemail.com